



**KIM KEAT RIPPLES**

**KIM KEAT  
RIPPLES**





# Toa Payoh | Overview

- The first town comprehensively planned and developed by HDB.
- Served by 3 MRT lines

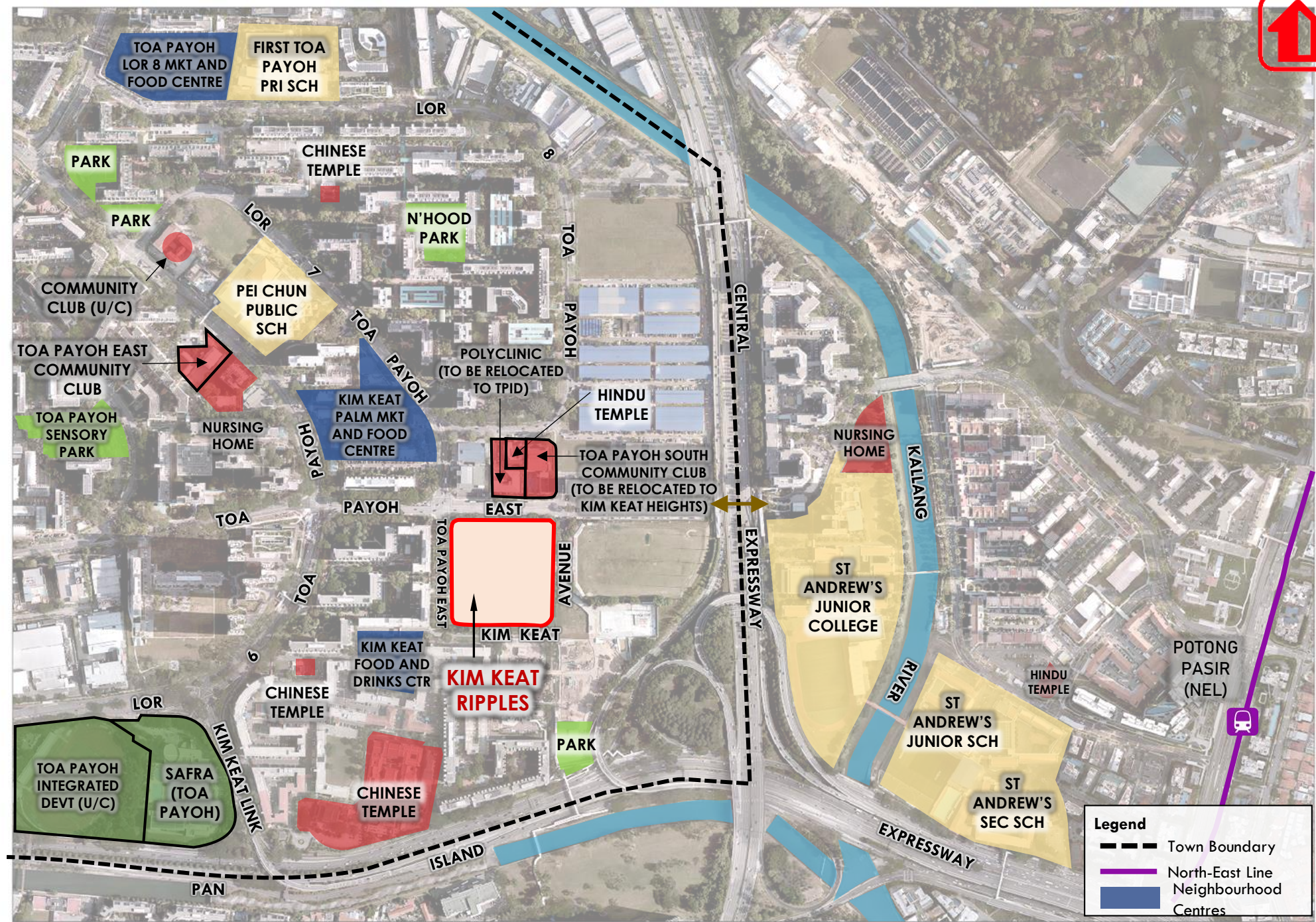






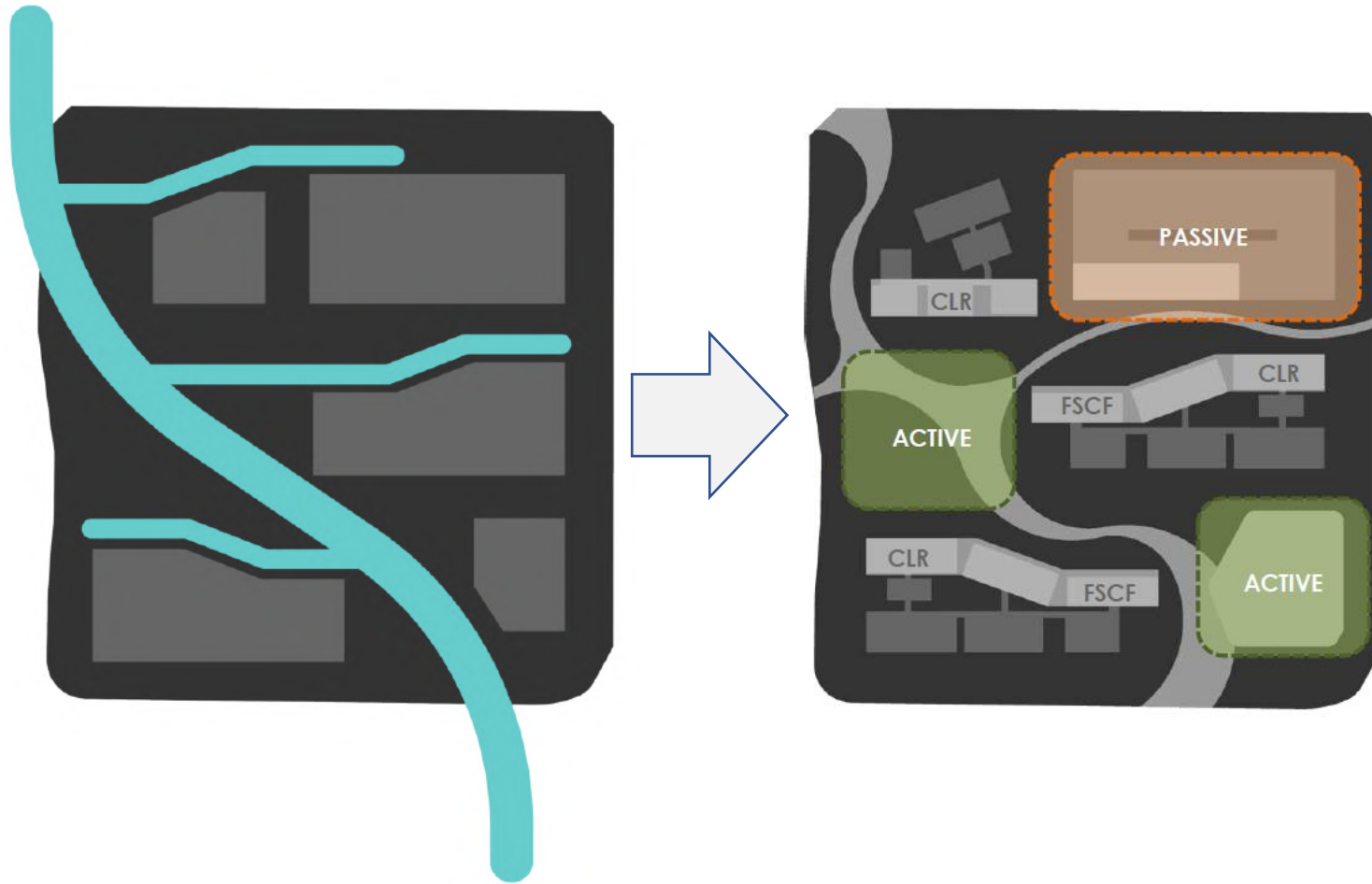
# TOA PAYOH | Amenities around Kim Keat Ripples

- Kim Keat Palm Market and Food Centre
- Toa Payoh South Community Club
- Pei Chun Public School/ First Toa Payoh Primary School/ St Andrew's Junior, Secondary, Junior College
- Upcoming Toa Payoh Integrated Devt i.e. Regional Sport Centre, Polyclinic, Library and Town Park.



Legend	
	Town Boundary
	North-East Line
	Neighbourhood Centres

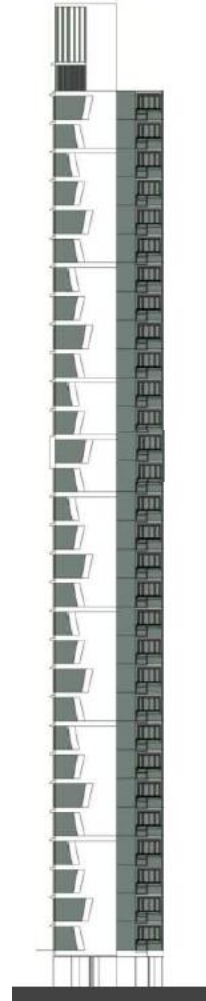




Design takes inspiration from the nearby **Kallang river**, where the **theme of water** resonates in the architectural site planning and design.



CONCEPT



Gable End



Main Facade

Design takes inspiration from the nearby Kallang river, where the theme of water resonates in the architectural site planning and design.

## Precinct Green Spaces

- Pockets of Green Spaces located in the precinct provide areas for residents to connect with nature, exercise and socialize

## Precinct Pavilion

## Community Living Rooms

- Community Living Rooms (CLR) are designed with furniture, overlooking to the Green Spaces for residents to enjoy the nature and socialize.



Precinct Green, Precinct Pavilion & Play facilities



## LEGEND:

- Drop-off Porch
- Child Care Centre at 1st storey
- Resident's Network Centre
- Adult Fitness Station / Elderly Fitness Station
- Children Playground
- Community Living Room
- Rooftop Garden
- Space for Community Garden at 8th storey
- Multi-storey Car Park
- Bus Stop
- Block Number
- Lift
- Staircase
- Driveway
- Covered linkway / Trellis / Shelter
- Linkbridge
- Precinct Pavilion
- Accessibility Route (sheltered)
- Barrier-free Access







*Welcome to your NEW HOME*

# KIM KEAT RIPPLES

**KIM KEAT**  
RIPPLES