

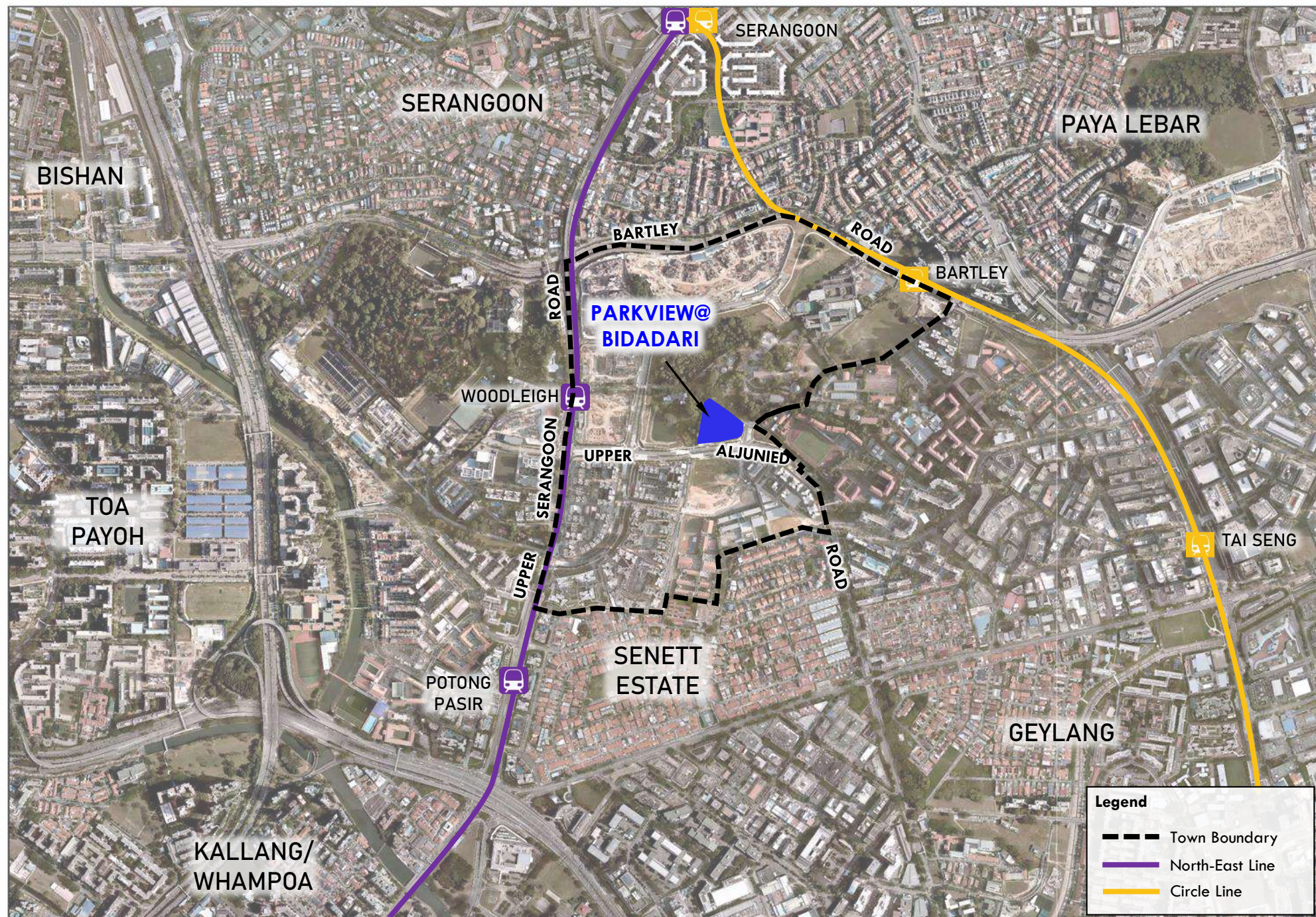


*Sharing on*

**PARKVIEW@BIDADARI**

# Bidadari | Overview

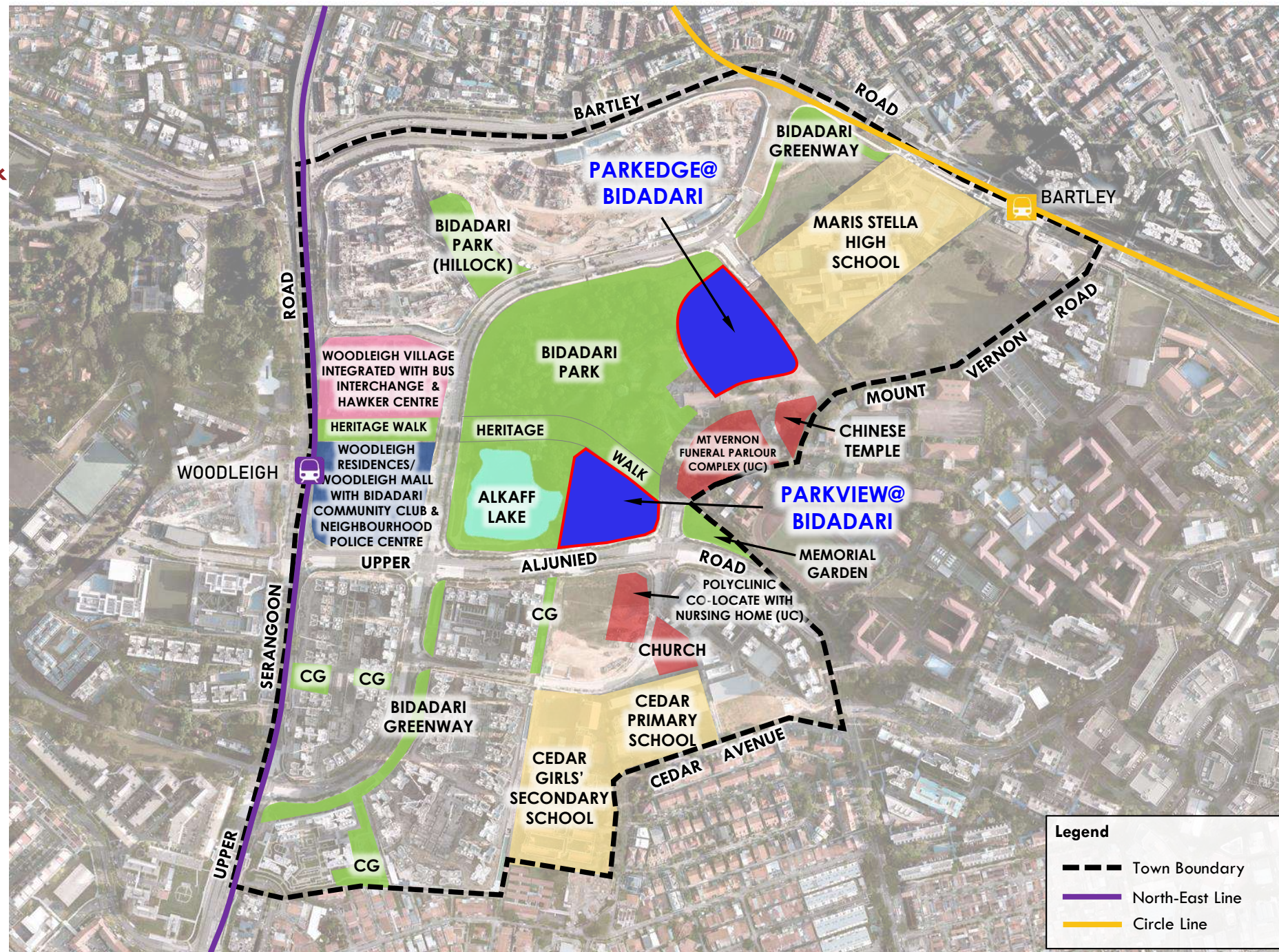
- Plans for Bidadari Estate was unveiled in 2013, with first housing launch in 2015
- Envisioned to be an urban oasis, where residents can rest, relax and connect with family and friends in a garden-like setting



# Bidadari |

## Amenities around ParkView @ Bidadari & ParkEdge @ Bidadari

- Woodleigh Village with Bus Interchange & Hawker Centre
- Woodleigh Mall with Bidadari Community Club & Neighbourhood Police Centre
- Bidadari Park & Alkaff Lake
- Polyclinic with Nursing Home
- Cedar Pri School/ Cedar Girls' Sec School/ Maris Stella High School



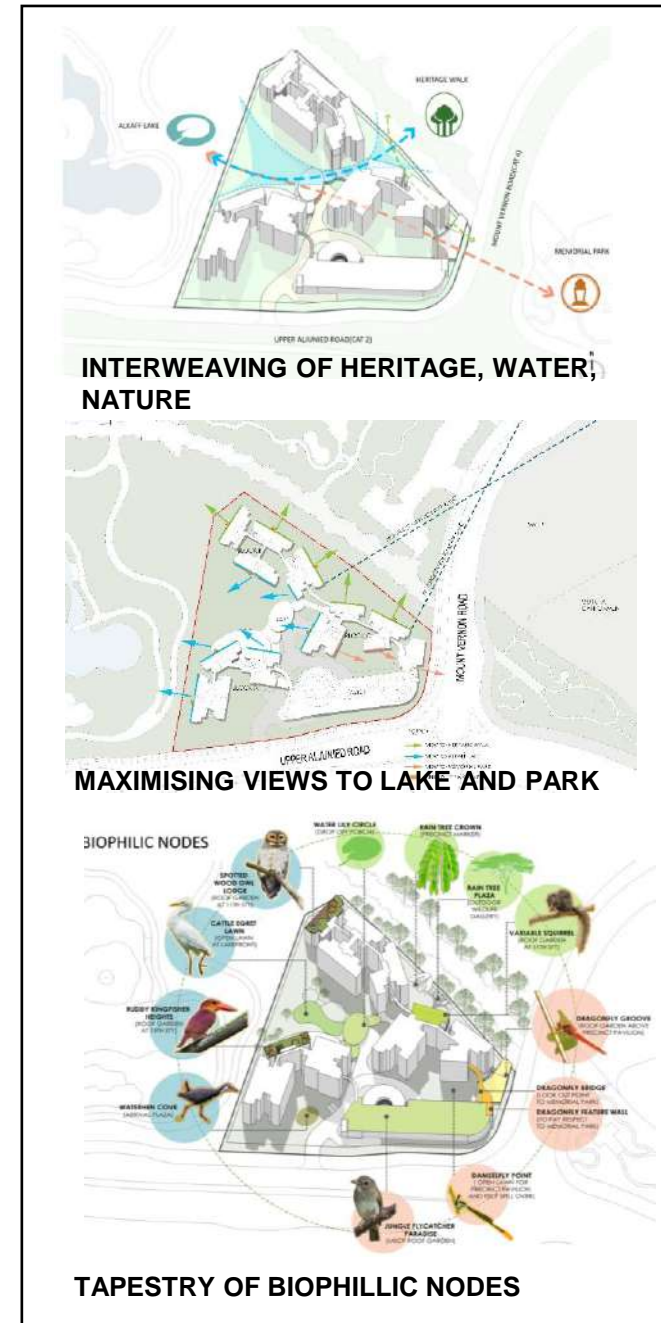
# ParkView @ Bidadari

interweaving HERITAGE, WATER & NATURE at BIDADARI



**ParkView @ Bidadari is bounded by Bidadari Park, Upper Aljunied Rd and Sang Nila Utama**

- The name “ParkView” is inspired by its parkfront location
- Offers seamless connectivity to the adjacent Heritage Trail and Bidadari Park



# ParkView@ Bidadari *Precinct Facilities*

## LEGEND:

-  Drop-off Porch
-  Preschool at 1st Storey
-  Residents' Network Centre at 1st Storey
-  Adult Fitness Station/ Elderly Fitness Station
-  Children Playground
-  Community Living Room at 1st or 2nd Storey
-  Rooftop Garden
-  Space for Community Garden at 7th Storey
-  Multi-storey Car Park
-  Block Number
-  Lift
-  Staircase
-  Driveway
-  Covered Linkway/ Trolis/ Shelter
-  Linkbridge
-  Precinct Pavilion
-  Accessibility Route (sheltered)
-  Barrier-free Access
-  "You are here"



**OPEN AREA OUTSIDE RNC**



**PRESCHOOL OPENS TO CENTRAL GREEN AREA**



**BIRDCAGE INSPIRED LOOKOUT POINTS AT ROOF GARDENS**

# ParkView@ Bidadari

FAÇADE IS INSPIRED BY THE RIPPLES OF THE WATER



## Parkside Living

- Maximize unit orientation toward the park and the lake
- Integrate balconies in park-facing units to enhance outdoor living and park views



HERITAGE INSPIRED PLAYGROUNDS - INITIAL SKETCH BY LANDSCAPE ARCHITECT



***Welcome to your NEW HOME***

**PARKVIEW@BIDADARI**