



Sharing on

Bartley GreenRise

Bidadari | THEME

“COMMUNITY IN A GARDEN”

Envisioned to be an urban oasis, where residents can rest, relax and connect with family and friends in a garden-like setting. Bidadari capitalizes on the rolling green with an integrated **Market Square and Bidadari Park**, where estates are connected via **Green Fingers** and the **Bidadari Greenway**.



Bidadari | THEME

“COMMUNITY IN A
GARDEN”

SPACES FOR THE COMMUNITY



▲ Bidadari Park with Alkaff Lake and Heritage Walk next to Market Square

A vibrant Market Square, located next to Woodleigh MRT Station, will include a housing development integrated with a bus interchange and community facilities as well as a mixed-use development

Green Fingers ►

Bidadari residents can enjoy a green environment and the convenience of more facilities and better connectivity. Several green fingers extend from Bidadari Park and connect to other public spaces within Bidadari, keeping its present park-like ambience.



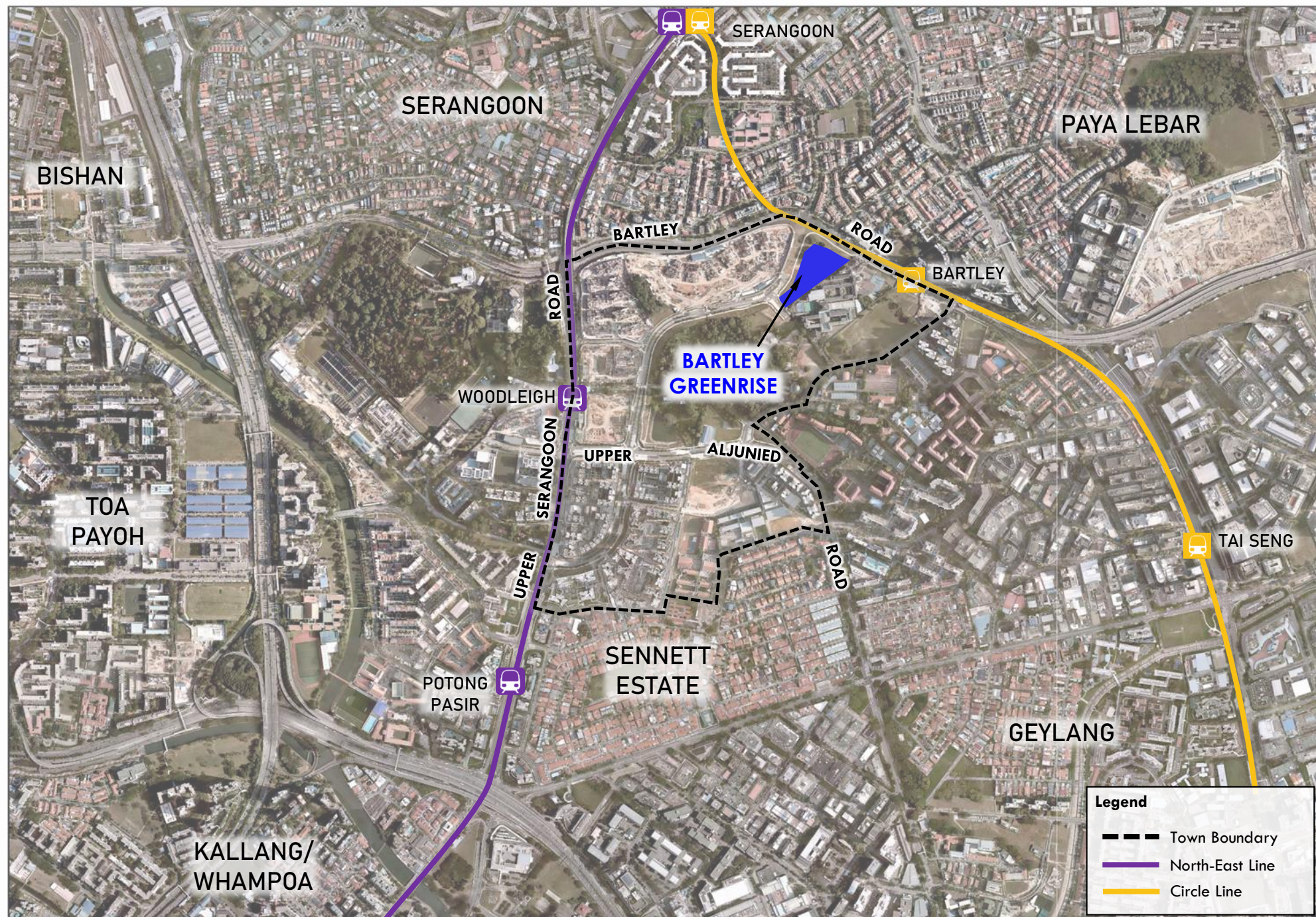
▲ Bidadari Greenway

The Bidadari Greenway is a 1.6km integrated green spine with a cycling and pedestrian network mapped out that runs through the green corridors. Precinct shops and facilities will also be strategically located along the Greenway.



Bidadari | Overview

- Plans for Bidadari Estate was unveiled in 2013, with first housing launch in 2015 and with many developments completed since
- Envisioned to be an urban oasis, where residents can rest, relax and connect with family and friends in a garden-like setting



Bidadari |

Amenities around Bartley Greenrise

- Woodleigh Village with Bus Interchange & Hawker Centre
- Woodleigh Mall with Bidadari Community Club & Neighbourhood Police Centre
- Bidadari Park & Alkaff Lake
- Polyclinic with Nursing Home
- Cedar Pri School/ Cedar Girls' Sec School/ Maris Stella High School



Bartley GreenRise

Bartley GreenRise is bounded by Bartley Road, Bidadari Park Drive, and Bartley Walk.

The name 'Bartley GreenRise' references the different levels of greenery within the precinct, from ground level to the roof gardens above the car park and at residential blocks.

The development is closely situated next to Maris Stella High School, as well as the recently completed Bidadari Park.



Bartley GreenRise

Precinct Facilities

PRESCHOOL

CHILDREN'S PLAYGROUND

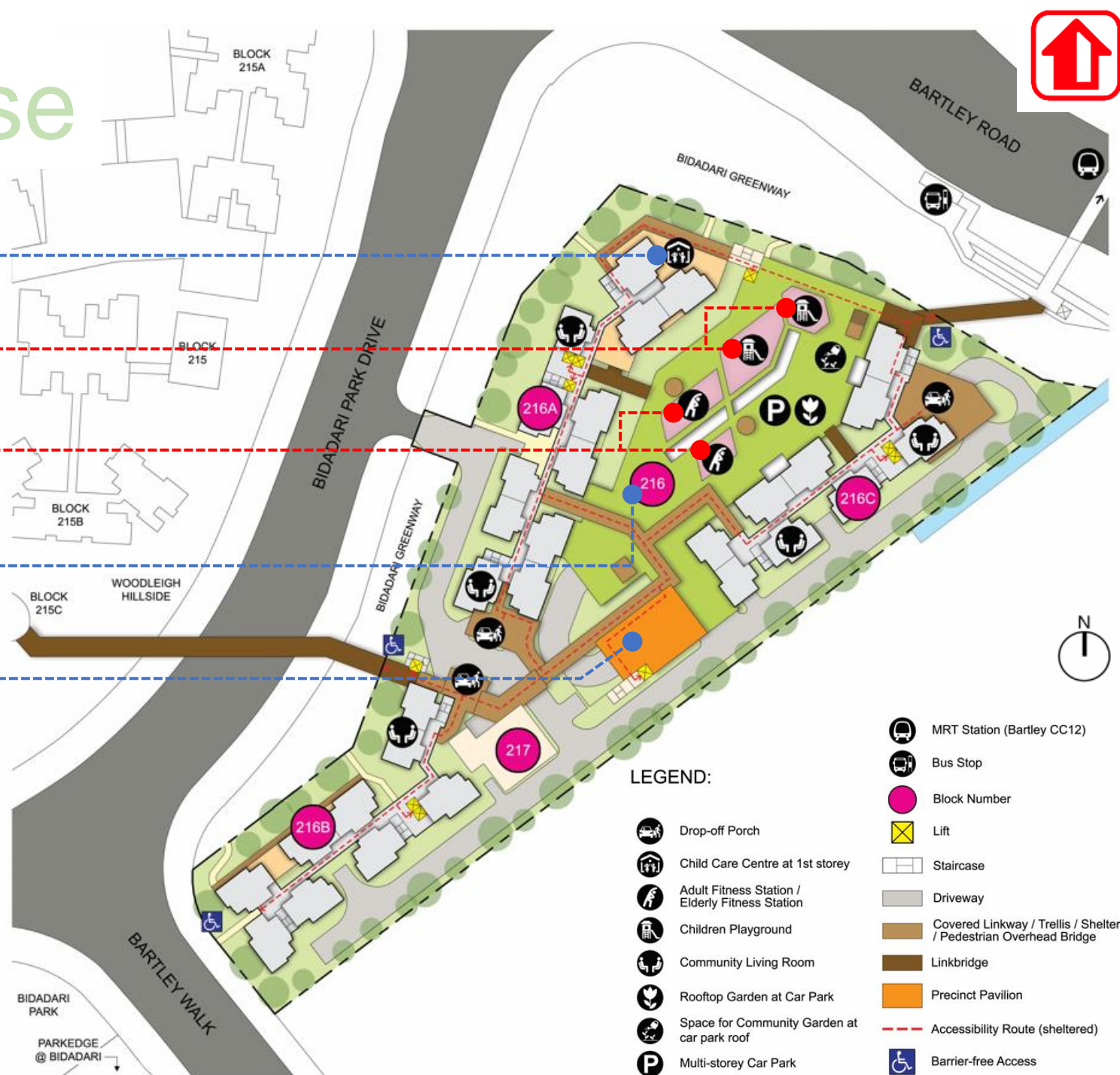
ADULT & ELDERLY FITNESS STATION

ROOFTOP GARDEN AT CARPARK

PRECINCT PAVILION

Precinct Green Spaces provide areas for residents to connect with nature, exercise and socialize

Community Living Rooms (CLR) are designed with furniture, overlooking to the green spaces and surroundings for residents to enjoy the views and socialize.



Bartley GreenRise

Unique Features

Precinct Green Spaces with facilities allow residents to exercise and connect with neighbours and nature.



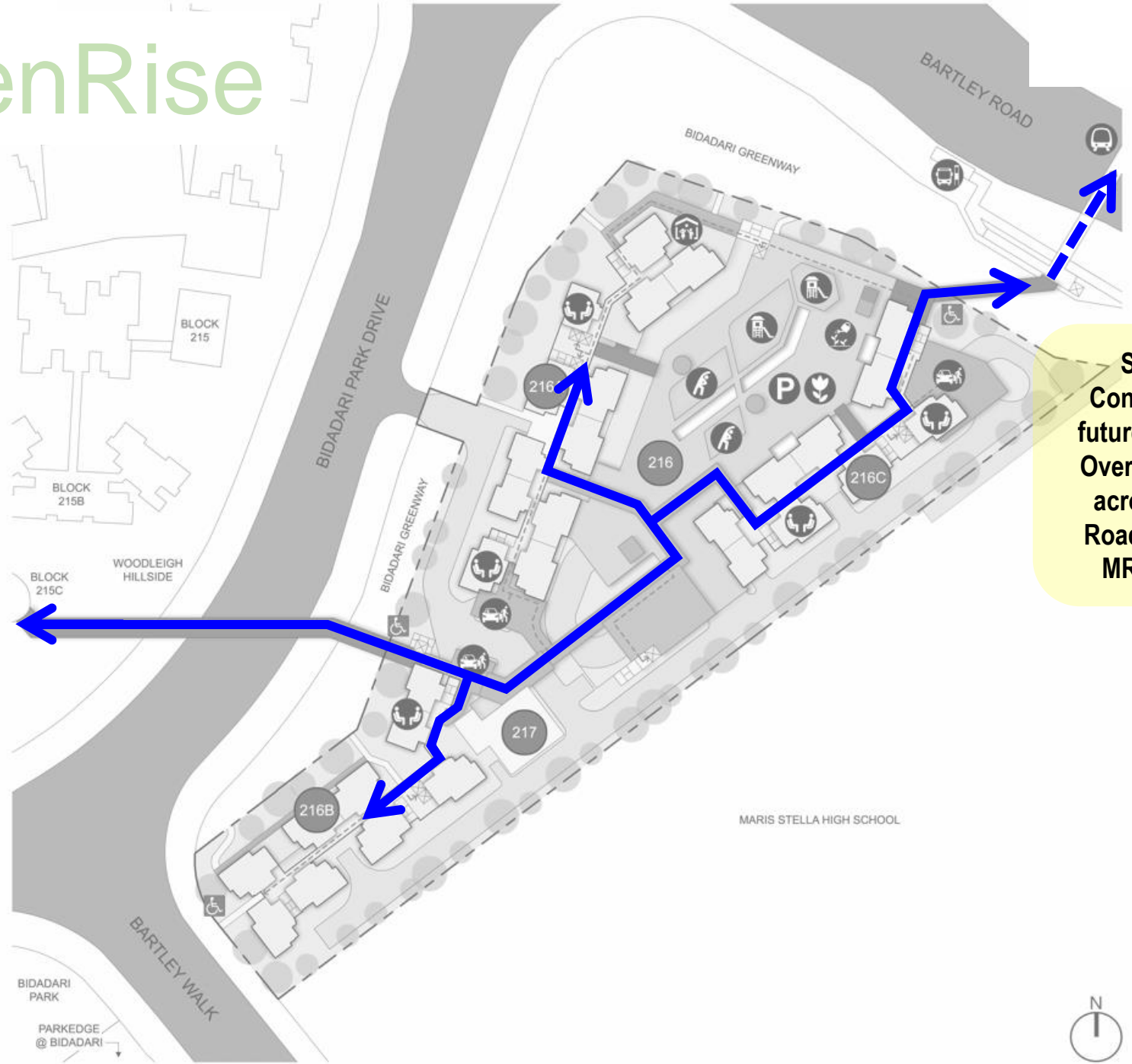
LEGEND:

- MRT Station (Bartley CC12)
- Bus Stop
- Block Number
- Lift
- Staircase
- Driveway
- Covered Linkway / Trellis / Shelter / Pedestrian Overhead Bridge
- Linkbridge
- Precinct Pavilion
- Accessibility Route (sheltered)
- Barrier-free Access
- Drop-off Porch
- Child Care Centre at 1st storey
- Adult Fitness Station / Elderly Fitness Station
- Children Playground
- Community Living Room
- Rooftop Garden at Car Park
- Space for Community Garden at car park roof
- Multi-storey Car Park

Bartley GreenRise

Unique Features

This precinct comes with two linkbridges to provide sheltered connectivity for residents to access neighbouring amenities in all weather conditions.



Sheltered Connectivity to Block 215C (Woodleigh Hillside) across Bidadari Park Drive

Sheltered Connectivity to future Pedestrian Overhead Bridge across Bartley Road (to Bartley MRT Station)



Welcome to your *NEW HOME*



Bartley GreenRise