

# BARTLEY BEACON

## Urban Homes in Nature

The Bidadari Estate is envisioned as an urban oasis where residents can enjoy a green and relaxed environment, well-served by a variety of amenities.

Bartley Beacon is located within Bidadari estate in Toa Payoh town. Located at the junction of Bartley Road and Mount Vernon Road, it comprises 8 residential blocks with heights ranging from 14 to 17 storeys and 880 units of 3-, 4- and 5-room flats.

The development is named Bartley Beacon due to its prominent location marking one of the entrances into Bidadari estate.

比达达利住宅区被设想为一个城市绿洲，居民可以在这里享受绿意盎然、宁静悠闲的环境，并享有各种便利设施。

Bartley Beacon 坐落于大巴窑镇的比达达利住宅区内。它位于巴特礼路（Bartley Road）和翡珑山路（Mount Vernon Road）的交界处，有 8 座 14 至 17 层高的住宅楼，包括 3 房式组屋、4 房式组屋和 5 房式组屋，总共 880 个单位。

这个项目命名为 Bartley Beacon，是因为它的显著位置，标志着进入比达达利住宅区的主要入口之一。

Estet Bidadari digambarkan sebagai sebuah oasis bandar di mana penduduk boleh menikmati persekitaran yang hijau dan santai, dilayan dengan baik oleh pelbagai kemudahan.

Bartley Beacon terletak dalam estet Bidadari di bandar Toa Payoh. Terletak di persimpangan Bartley Road dan Mount Vernon Road, ia terdiri daripada 8 blok kediaman dengan ketinggian antara 14 hingga 17 tingkat dan 880 unit flat 3-, 4- dan 5 bilik.

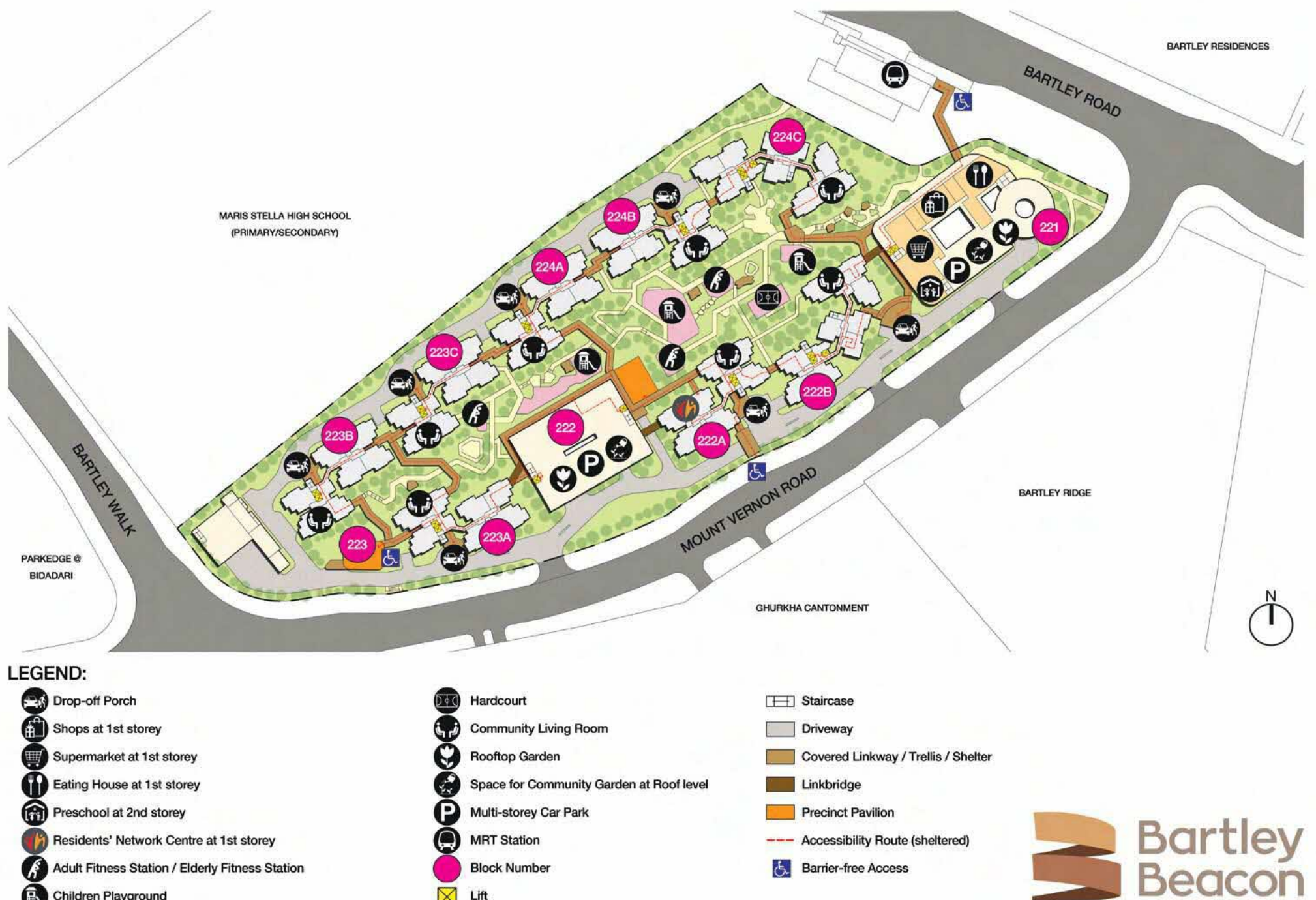
Pembangunan itu dinamakan Bartley Beacon kerana lokasinya yang menonjol menandakan salah satu pintu masuk ke estet Bidadari.

பிடாடரி பேட்டை ஒரு நகர்புற சோலையாகப் பார்க்கப்படுகிறது. இங்குக் குடியிருப்பாளர்களால் பல வசதிகள் கொண்ட ஓர் பசுமையான, தளர்வான தூழலை அனுபவிக்க முடியும்.

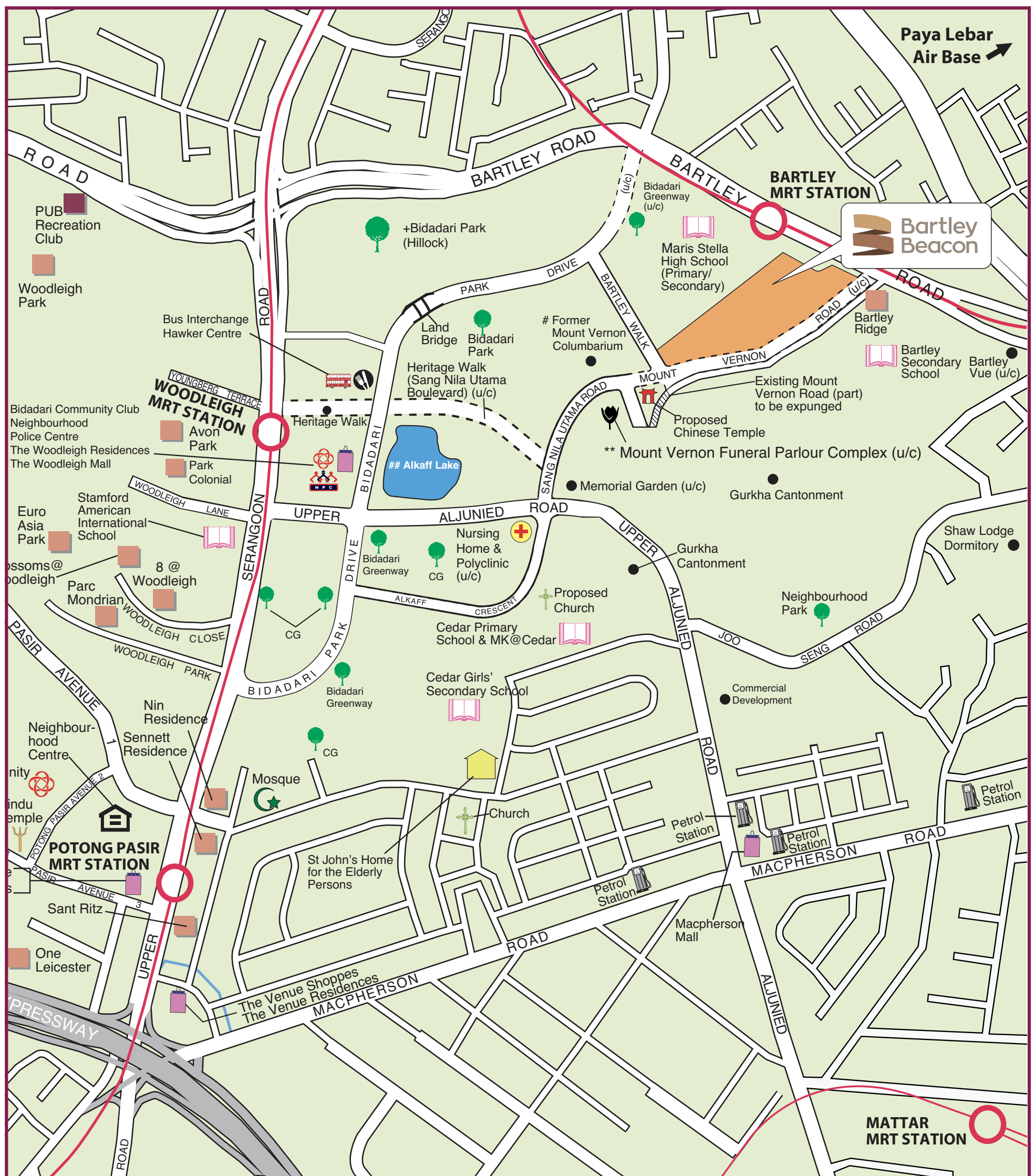
Bartley Beacon தோ பாயோ நகரத்தில் பிடாடரி பேட்டையில், பார்ட்லி ரோடு (Bartley Road) மற்றும் மவுன்ட் வெர்னன் ரோடு (Mount Vernon Road) சந்திப்பில் அமைந்துள்ளது. இதில் 14 முதல் 17 மாடிகள் வரையிலும் 8 குடியிருப்புப் புளோக்குகள் உள்ளன. இவற்றில் 3, 4- மற்றும் 5-அறை கொண்ட வீடுகள் மொத்தம் 880 இருக்கின்றன.

இதற்கு Bartley Beacon என்று பெயரிடக் காரணம், பிடாடரி பேட்டையின் ஓர் நுழைவாயிலை குறிக்கும் வகையில் இது அமைந்திருக்கும் முதன்மையான இடமாகும்.

### Site plan for Bartley Beacon



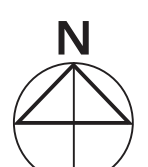
# Nearby Facilities



○ MRT Line & Station     Under Construction/ Future Road  
 MK MOE Kindergarten    (u/c) Under Construction    CG Common Green

# Area occupied by former Mount Vernon Columbarium including the funeral parlours is earmarked for the developments in Bidadari Estate. Plans to relocate the niches have been announced by NEA on 28 Oct 2015 and the niches have since been relocated.  
 + Designated park space that will be kept rustic and the landscaping will be kept as natural as possible.  
 \*\* Part of the former Mount Vernon Columbarium site has been set aside for a new and modern Mount Vernon Funeral Parlour Complex (MVFC).  
 ## Alkaff Lake will also serve as a stormwater retention pond.

Scale 0 200 400 Metres  
 100 300 500



Residents of Bartley Beacon are served by Woodleigh MRT Station (North East Line), Bartley MRT Station (Circle Line) and the upcoming Bus Interchange at Woodleigh Village. Find out about the transport connections in your estate with **LTA's Travel Guide**.

A variety of shopping and dining experiences are available at the nearby Woodleigh Mall and Hawker Centre at Woodleigh Village. Residents can also visit the HDB Neighbourhood Centre at Potong Pasir Avenue 1, for additional retail and food options.

For leisure and recreation, residents can visit Alkaff Lake and Bidadari Park, a regional park at the heart of Bidadari Estate, and immerse themselves in a natural and rustic setting. Residents can also take a stroll, jog or cycle through the park, amid the Heritage Walk at Woodleigh Village lined with beautiful mature trees. Check out the resources by **National Parks Board** to learn more on how to safely share spaces with wildlife while enjoying the benefits of living close to nature.

Bartley Beacon is served by Bidadari Community Club. Follow them via **Facebook** to find out more on the activities and sign-up as a volunteer!

# Contemporary Homes

Bartley Beacon comes with various recreational facilities, such as playgrounds and fitness stations.

An eating house, supermarket, shops, a Preschool and a Residents' Network Centre are also conveniently located within the development.

The roof gardens located above the two Multi-Storey Car Parks are ideal spots for residents to unwind and relax amidst the green landscaping.



# Smart and Eco-Friendly Living

To encourage a 'green' lifestyle, Bartley Beacon has several eco-friendly features:

- Separate chutes for recyclable waste
- Regenerative lifts to reduce energy consumption
- Bicycle stands to encourage cycling as an environmentally friendly form of transport
- Parking spaces to facilitate future provision of electric vehicle (EV) charging
- Active, Beautiful and Clean (ABC) Waters design features to clean rainwater and beautify the landscape
- Use of sustainable and recyclable products in the development

Bartley Beacon also comes with Smart Lighting in the common areas to reduce energy usage and Smart Pneumatic Waste Conveyance System to optimise the deployment of resources for cleaner and fuss-free waste disposal.

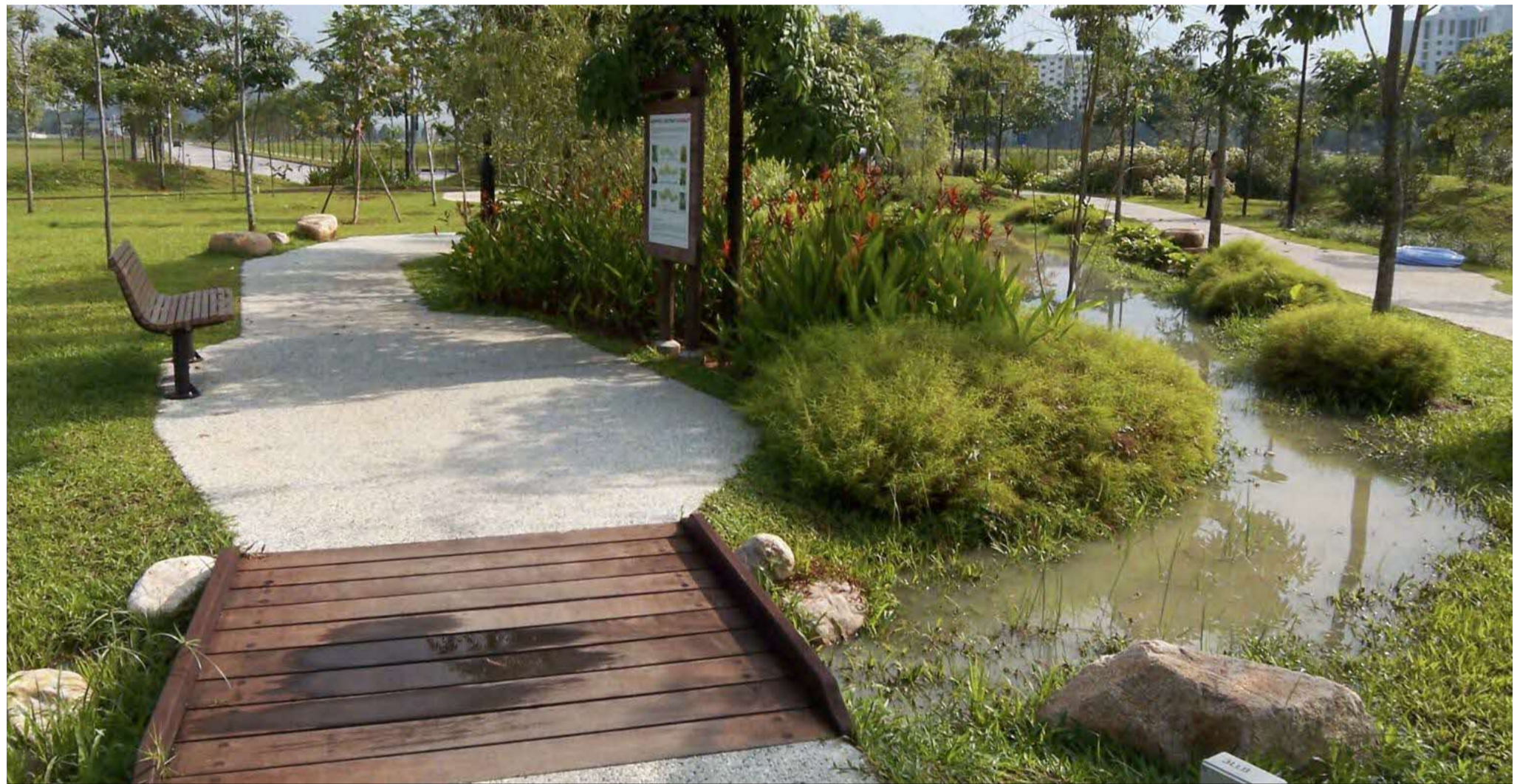
All these will contribute to a more liveable, efficient, sustainable and safer living environment.



Separate chutes for recyclable waste



Bicycle stands to encourage cycling



ABC Waters design features

© 2025 Housing & Development Board.  
All rights reserved.

