

GROVE
Spring @ YISHUN

Welcome to Your
New Home



YISHUN TOWN

Overview

- Vibrant town that offers a wide range of commercial, community and recreational amenities for its residents
- Residents can also enjoy proximity to parks and waterbodies in and around the town



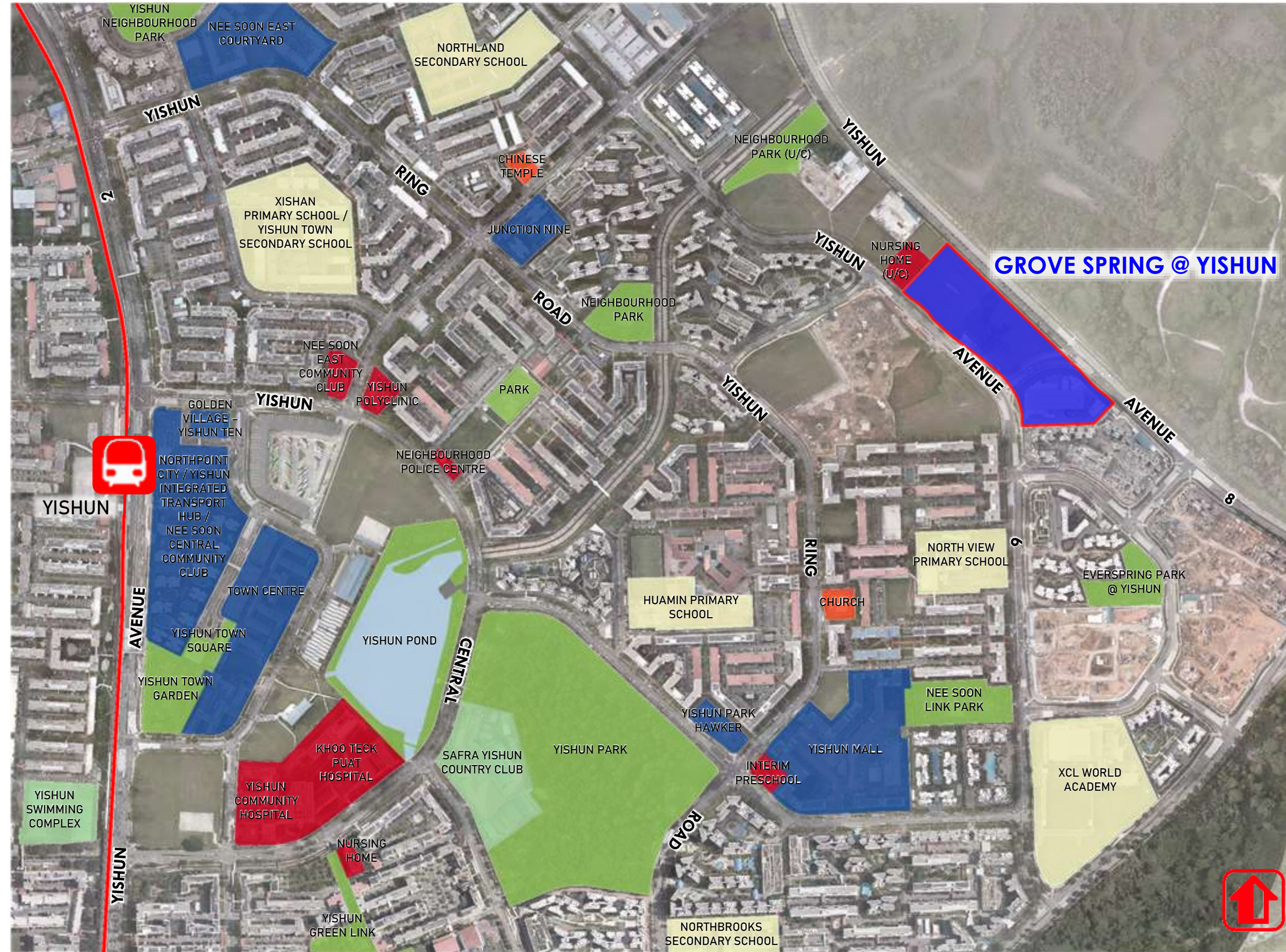
Legend

- Town Boundary
- North-South Line

YISHUN TOWN

Amenities around Grove Spring @ Yishun

- Yishun Mall
- Junction Nine
- Everspring Park @ Yishun
- Nee Soon Link Park



Green Living



Grove Spring @ Yishun features a range of recreational facilities, such as playground, adult and elderly fitness stations and a roof garden atop the Multi-storey Carpark. These facilities are strategically placed to encourage interaction and foster communal bonds among residents. Ground-level landscaping areas are further enriched by ABC rain gardens, providing educational value and a serene atmosphere for residents to enjoy.



Community Living Rooms

Located on the void deck, the community living rooms offer vistas to lush green areas, acting as lively hubs for fostering connections among residents. The scenic surroundings promote engagement, allowing residents to enjoy nature while developing meaningful relationships with their neighbours.

Precinct Green Spaces

Offer residents the perfect setting to reconnect with nature, engage in exercise, and foster meaningful social connections. Whether for seeking a serene spot for a morning jog, a tranquil area for yoga practice, or simply a picturesque backdrop for gatherings with neighbours.



Facilities

- Preschool
- Adult Fitness Station
- Multi-Storey Carpark
- Elderly Fitness Station
- Children's Playground
- Drop-off Porch

Elderly Fitness Station

Drop-off Porch

Adult Fitness Station

Drop-off Porch

Elderly Fitness Station

Children's Playground

Drop-off Porch

Children's Playground

Drop-off Porch

Residents' Network Centre

Precinct Pavilion



Highlights

To facilitate easy identification of the large site, it has been divided into three distinct zones, each marked by a unique colour on the façade and wayfinding. This approach ensures straightforward navigation.

The design features seamless connectivity in the common areas that links facilities and residential blocks. This fosters both active and passive spaces, allowing residents to enjoy a variety of green areas. Additionally, the expansive roof garden atop the multi-storey carpark enhances the development's greenery.



GROVE
Spring @ YISHUN

Welcome to Your
New Home

