

An architectural rendering of the Tampines Greenopal development. The image shows several modern, multi-story apartment buildings with a mix of grey and yellow-brown facades. The buildings are arranged around a central green space with winding paths, trees, and a small stream. A large body of water is visible on the right side of the image. The sky is blue with scattered white clouds. A green banner is in the top left corner, and a red house icon is in the bottom right corner.

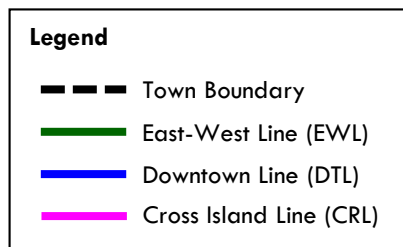
Sharing on

TAMPINES GREENOPAL



Tampines Town | Overview

- Variety of commercial and recreational offerings
- Planned and developed with a Regional Centre
- Improved Rail Connectivity with completion of Cross Island Line Phase 1 (CRL1) in 2030



Tampines

Town |

Amenities around Tampines GreenOpal

- Mixed-use commercial & residential development along Tampines Street 94
- Bedok Reservoir Park



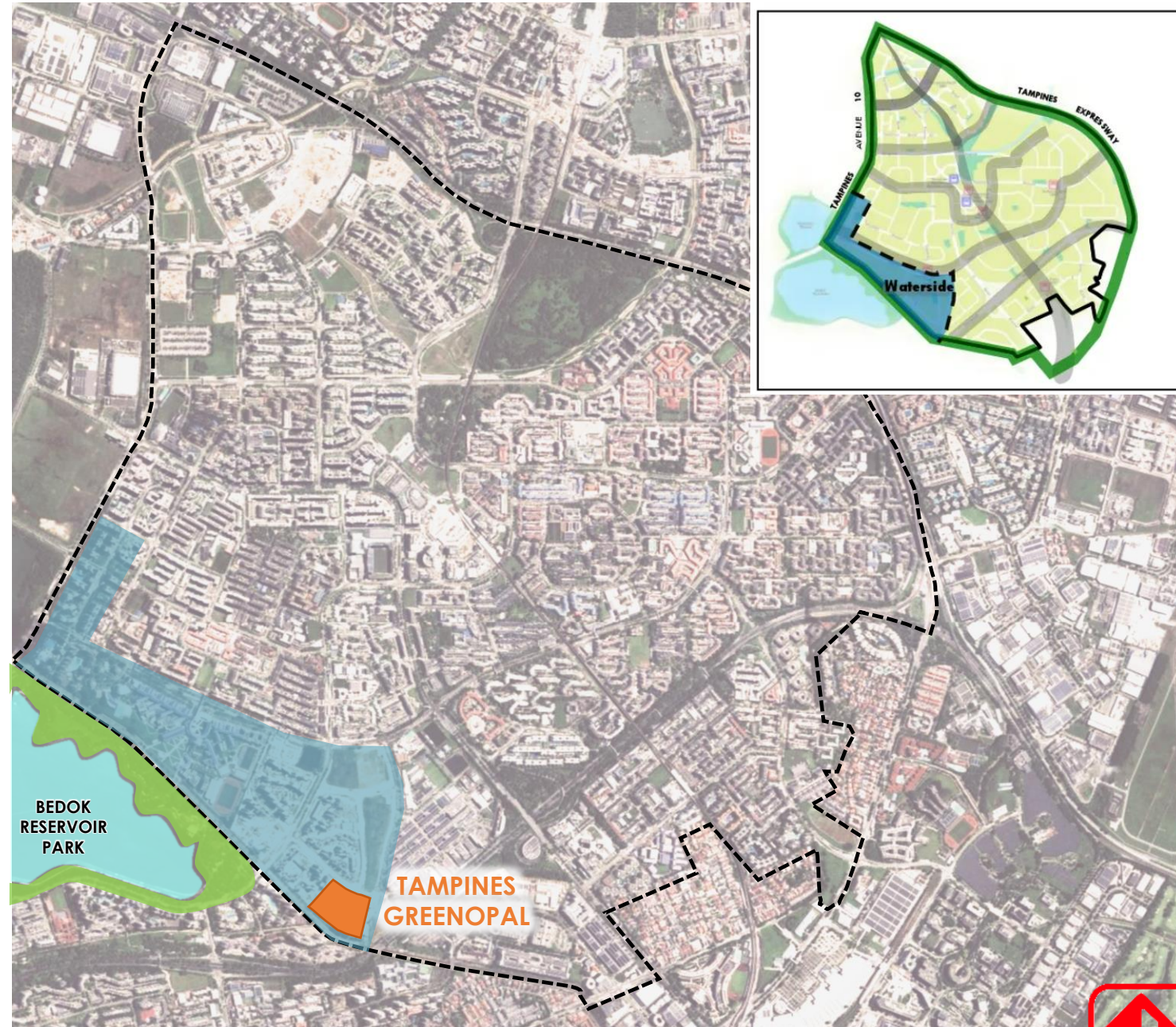
Tampines Town | Design Themes

Town Theme: A Leaf within Our City in Nature

- The shape of Tampines town resembles a leaf with a vein network that represents the various road, rail, park connector, and cycling networks that extend throughout the town

Sub-Theme: Waterside

- The sub-theme reflects a new residential experience in Tampines that capitalises on the **water frontage** of Sungei Bedok and Bedok Reservoir.



Tampines GreenOpal

Tampines GreenOpal is situated along Tampines Street 96 and 95, bordered by Bedok Canal and Bedok Park Connector.

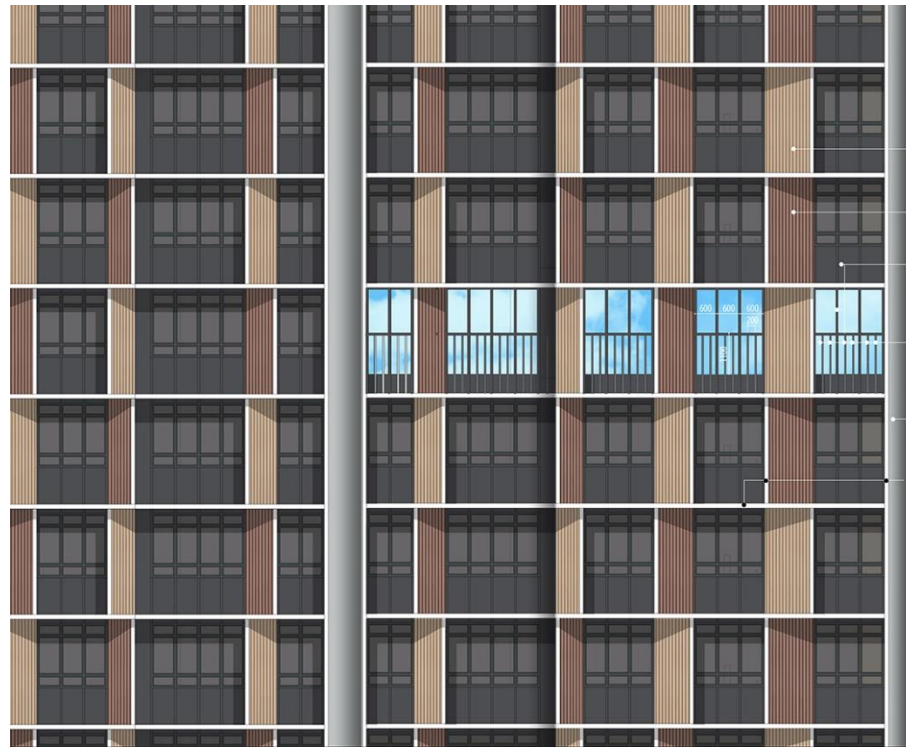
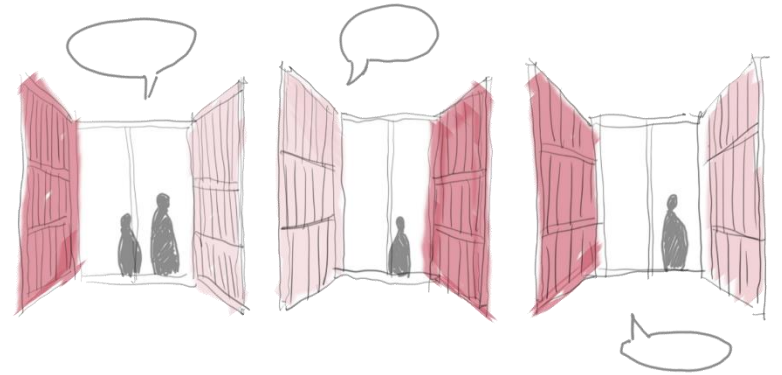
- The name 'Tampines GreenOpal' pays homage to its history as a former sand quarry, which has been converted into the nearby Bedok Reservoir.
- The facilities are also designed to reflect the shapes of gems.
- 8 residential blocks ranging from 12 to 17 storeys in height.



Tampines GreenOpal



The façade design draws inspiration from the operable window shutters of traditional houses. By playing with the rhythmic movement, the façade creates a dynamic interplay of depth, shadow and variation, resulting in a visually engaging architectural expression.



FORMLINER : RECKLI 1/31 Rib Type C

- Favorite Shawl NP N 1902 P
- Garden Earth NP N 1905 D
- Bedrock Bottom NP N 1981 A
- Puritan Black NP N 1982 D
- Lighter Pewter Grey NP N 1998 P
- White

TAMPINES N9C15-16 FACADE MATERIAL/COLOUR

* colours may look different on prints and other display monitor please refer to actual materials and colour chart

Vibrant Living

- Multiple green spaces foster interaction and exercise, enhancing well-being.
- Easily accessible social communal facilities encourage intergenerational bonding around the central courtyard.



Tampines GreenOpal



PRESCHOOL

PRECINCT PAVILION

ADULT & ELDERLY FITNESS STATION

CHILDREN'S PLAYGROUND

LEGEND
 Precinct Green Spaces
 Community Living Room

Precinct Green Spaces

- Green Spaces located in the precinct provide areas for residents to connect with nature, exercise and socialize

Community Living Rooms

- Community Living Rooms (CLR) are designed with furniture, overlooking to the Green Spaces for residents to enjoy the nature and socialize.

LEGEND

| | |
|---|-------------------------------------|
| Drop-off Porch | Block Number |
| Preschool at 1st storey | Lift |
| Residents' Network Centre at 1st storey | Handicap Lots |
| Adult Fitness Station / Elderly Fitness Station | Staircase |
| Children Playground | Driveway |
| Hardcourt | Covered Linkway / Trellis / Shelter |
| Community Living Room | Linkbridge |
| Rooftop Garden | Precinct Pavilion |
| Space for Community Garden at 8th Storey | Accessibility Route (sheltered) |
| Multi-storey Car Park | Barrier-free Access |
| | "You are here" |



Welcome to your NEW HOME

TAMPINES GREENOPAL

